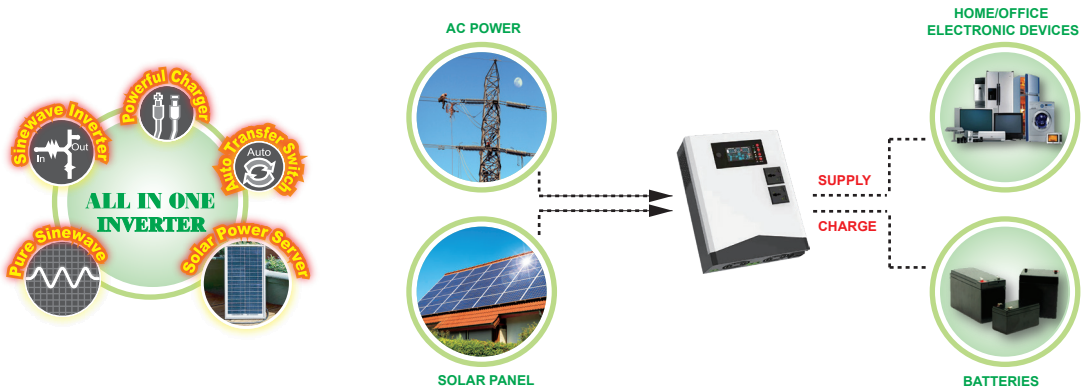


**MLH Series Features:**

- ✦ MPPT Based Solar Inverter
- ✦ Integrated Simulated Sinewave Inverter
- ✦ Built in MPPT Solar Charge Controller
- ✦ High Efficiency, lightweight and compact design
- ✦ Configurable AC Solar Priority
- ✦ Double Power Surge bearable for demanding load
- ✦ Smart and Enhanced Protection System



**Modified Light House Series**

	MODEL	MLH-1200	MLH-2400
	<b>DESCRIPTION</b>	Modified Sinewave Inverter	
<b>INPUT</b>	Capacity	1200VA 800W	2400VA 1500W
	Nominal Voltage	230VAC Systems	
	Selectable Voltage Range	90~280 VAC (For Home Appliances) 170~280VAC (For Personal Computers)	
	Frequency Range	50 / 60 Hz (Auto sensing)	
<b>OUTPUT</b>	Inverter Mode Voltage	230Vac+/- 5%	
	Surge Power	2400VA	4800VA
	Efficiency (Peak) Battery to INV.	88%	
	Wave Form	Simulated Sine Wave	
	Transfer Time	10 ms (For Personal Computers) ; 20 ms (For Home Appliances)	
<b>BATTERY &amp; AC CHARGER</b>	Battery DC Voltage	12VDC	24VDC
	Floating Charge Voltage	13.5VDC	27VDC
	Overcharge Protection	16VDC	32VDC
	Max. Charge Current	20A	
<b>SOLAR CHARGER</b>	Max. PV Array Power	500W	1000W
	MPPT Range@ Operating Voltage	15V~80V	
	Max. PV Array Open Circuit Voltage	102V	
	Max. Charging Current	40A	
	Max. Efficiency	98%	
<b>PHYSICAL</b>	Dimension - D x W x H (mm)	282 x 221 x 73	
	Net Weight (kgs)	3.2	3.6
<b>PHYSICAL</b>	Humidity	5~95% Relative Humidity (Non-condensing)	
	Operating Temperature	0°C ~ 55°C	
	Storage Temperature	-15°C ~ 60°C	

\* specification Subject to Change without Prior Notice.